

Professional Services

Roof consulting
Construction documentation and administration
Condition assessment reports
Leak investigations
Cost estimating
Hands-on surveys and test probes
Construction litigation support/Expert witness services
Facilities maintenance plans
Materials analysis and selection
Preservation planning

Steep-Slope Roofing

Slate
Wood shingles
Clay tile
Standing seam and batten seam copper
Asphalt shingles
Flashings
Rainwater conduction systems

Low-Slope Roofing

Flat seam copper
Fluid-applied membrane systems
Modified bitumen systems
EPDM
Flashings
Roof Drainage

Building Envelope

Exterior masonry
Stained and leaded glass
Architectural woodwork
Steeple and cupolas
Parapets, chimneys, and cornices
Lightning protection systems

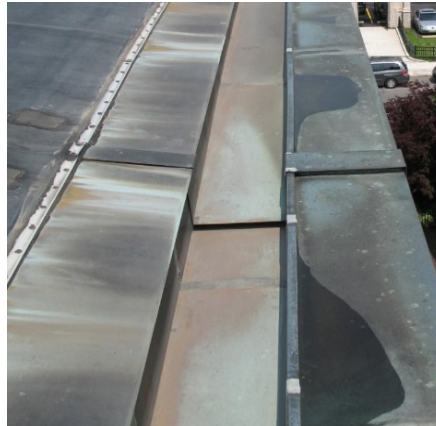
Competence

Expertise in roofing technology and building pathology
Holistic approach to identifying and treating deterioration
Hands-on, up-close surveys from ladders and high reach equipment
Principal involvement in all projects
Attention to detail
Close client collaboration
Frequent site visits during construction to monitor the work
Continuously refining our understanding of building technologies

Do it Right, Do it Once

What's Up With That? – What Can Happen When There Is No Roof Consultant

Some not so good results can happen. Here is a smattering of recent examples:



▲ Termination bar fasteners associated with the EPDM roof puncture the apron of the gutter liner, a loose-lock expansion joint is located below the high water line in the gutter, and a coping cap drains to the outside, thereby saturating (and staining) the exterior masonry wall.



▲ No need for a cant, just stick some slate shims in there and hope the sealant will hold them in place.



▲ That underlayment is fine, right?



▲ Forgot the cant? No problem. Just add wood blocking below the head of every course to prevent the slates from rocking.



▲ No, the slate is not supposed to look like that!

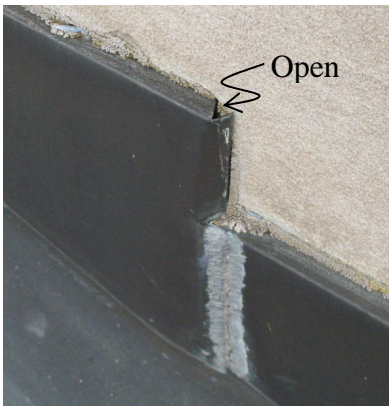


▲ Headlap! We don't need no stinking headlap! Well, Code says you need 3", not 1-1/2" to 2".



▲ You know that's going to pond water and leak. Bolts thru the gutter liner – really!

What Can Happen When There Is No Roof Consultant Cont'd.



Now the blatant marketing pitch: Levine & Company – we add value to projects by accurately assessing existing conditions, making sure the right materials get specified, paying attention to the details in our specs and drawings, working closely with contractors and other design professionals, and making sure things gets done right the first time. That’s what we do – every day, every project.



These counterflashings don’t lap, create a ledge for water to ride back toward the reglet, and are open at the top corner.

Levine & Company News

Jeff has recently served as an expert witness in a number of construction defect cases related to roofing. Since he is getting up there in age and seems to like this kind of work, Levine & Company is now expanding its professional services to include expert witness and construction defect litigation support services.

Julie wrote a two-part article entitled “Slate Roofing: Innovation In An Old Industry” that was published in the January and February, 2017 issues of *Interface*, The Journal of RCI, Inc. The articles discuss recent changes in the industry, including those to codes and standards, materials testing updates, new technical resources, new installation methods, and the growth in underlayment and material choices.

In December, Julie was elected Vice President of RCI, Delaware Valley Chapter, a position from which she will automatically ascend to President in 2018. The Chapter is planning several exciting events this year. Want to learn more? Just give Julie a call!

DLVW/SJW@VVe